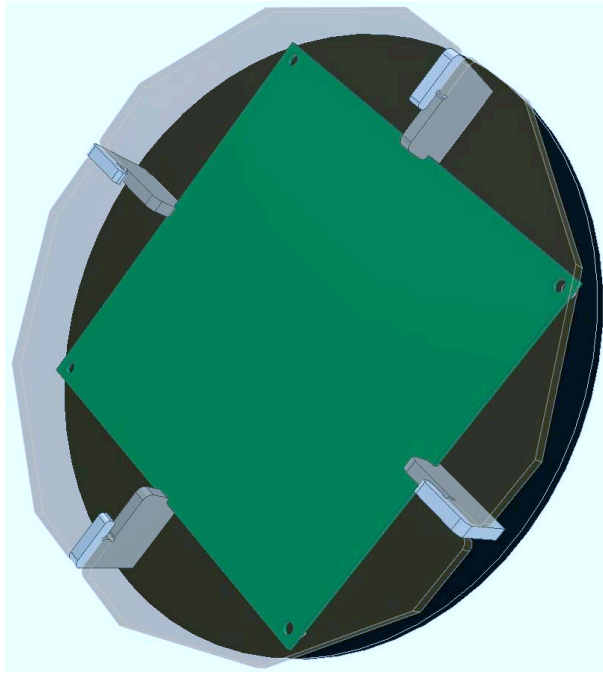
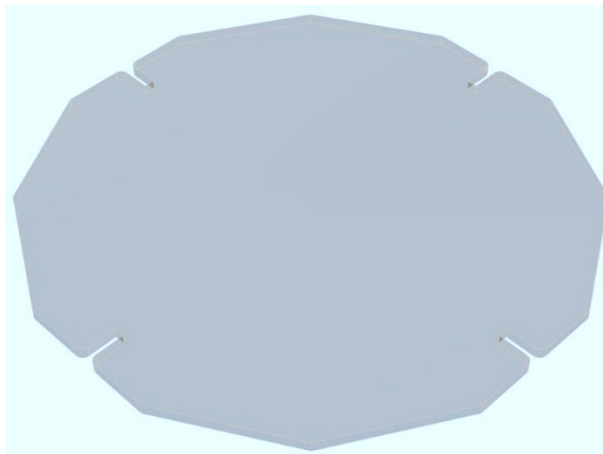


Watch case assembly

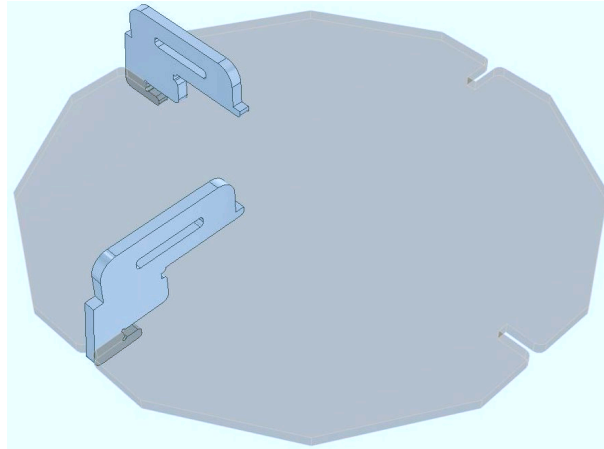


*Before assembling, remove the protective film from the parts. Please note: when removing the film from the diffuser. This is transparent acrylic with tinting, do not remove the tint by mistake, only a protective film!*

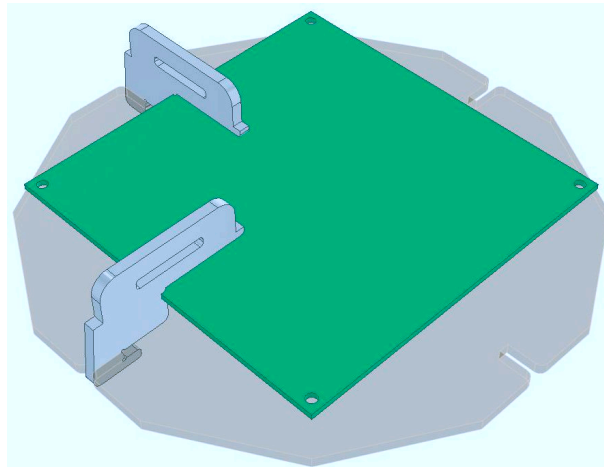
Reinstall the diffuser.



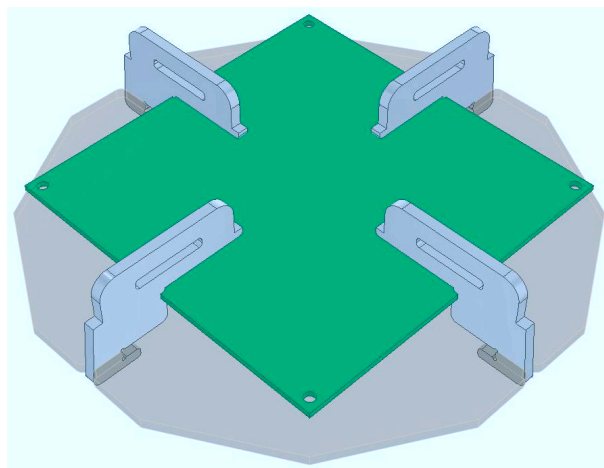
Then add two racks.



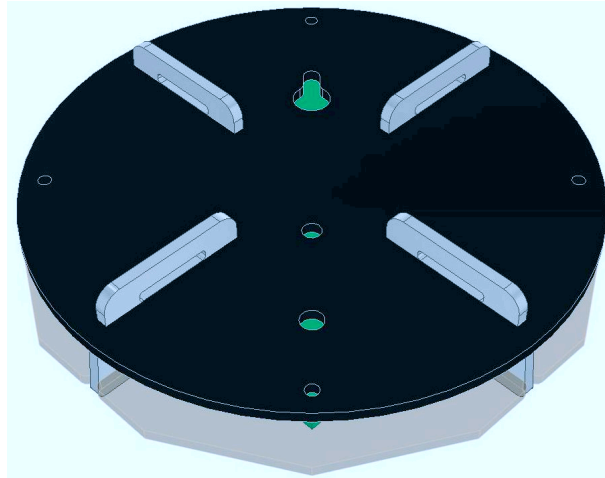
Insert the watch board.



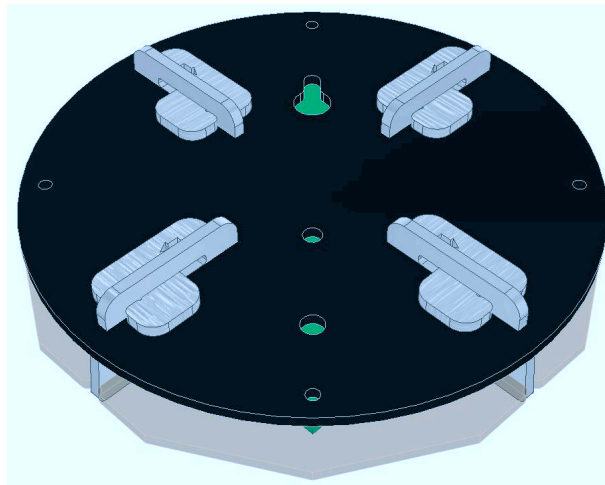
Install the remaining racks.



Install the base of the watch case.



Set locks.



The case is assembled!...